

Broccoli Seed Experiment 3 LCS

by vic smyth smyth.vic@gmail.com 3/15/2024

Kayna posted 2 experiments using the Bengston Method of Energy Healing® to influence the growth of results.

In this 3rd round there will be 4 broccoli seed experiments running at the same time, 2 with remote influencers, 2 local experiments; one where I will treat one dish with treated cotton, one with a commercially available homeopathic solution and the 3rd as an untreated control, the other with 2 magnets of various strength and an untreated control.

See Discussion at end of report for results.

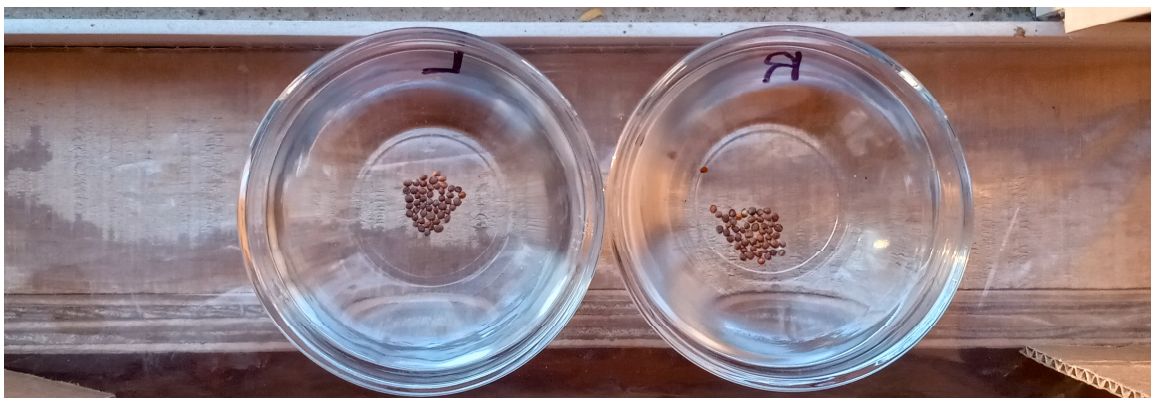
Setup There will be 2 dishes with 50 seeds each marked L and R for left and right, 2 separate jars of water marked L and R, and 2 small plastic cups marked L and R used to gently top off the water. The remote influencer, LeastComicStanding, will get pictures of the jars of water (water originally from the same source) and choose 1 to treat remotely. As the experimenter i will be blinded as to the choice. My only intention will be that the experiment is a success, showing a statistically significant difference.

LeastComicStanding may treat the water with any modality of choice, any intention of choice, any frequency of choice.

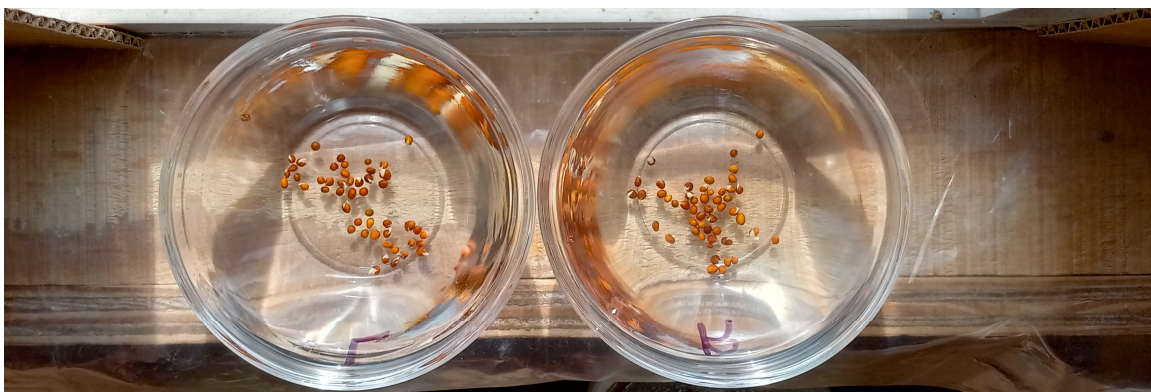
LeastComicStanding may start treating the jar of water a week prior to Tuesday, Feb 20th, 12pm Chicago Time



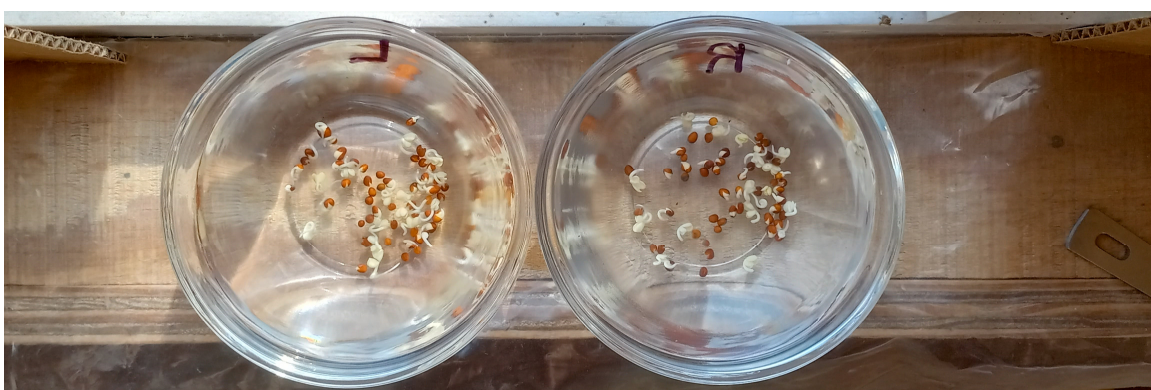
Day 1:



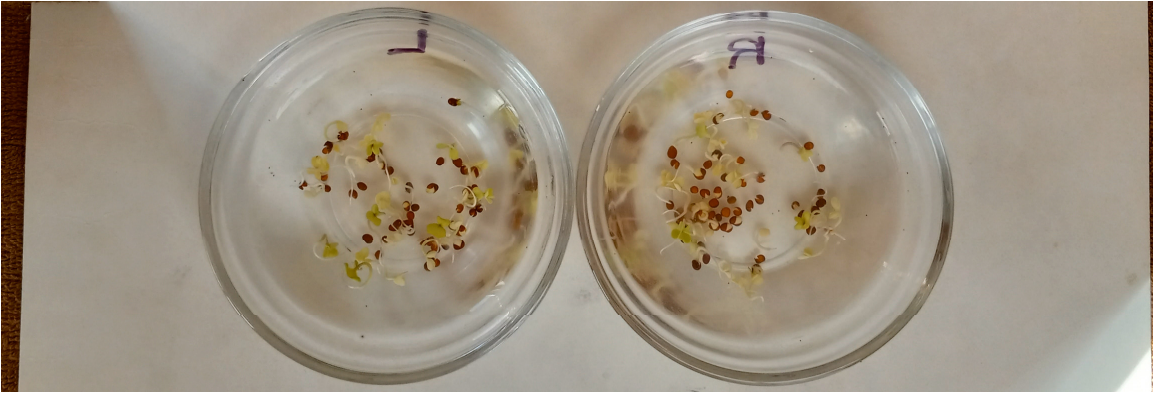
Day 2:



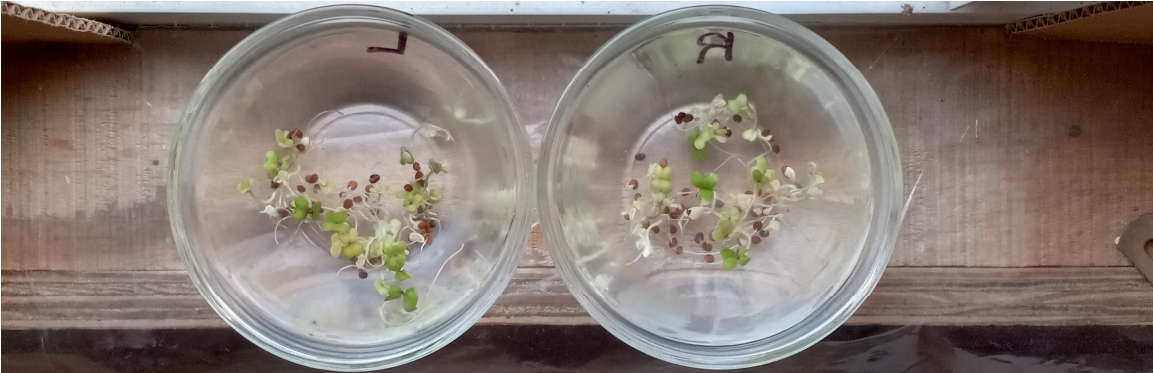
Day 4:



Day 6:



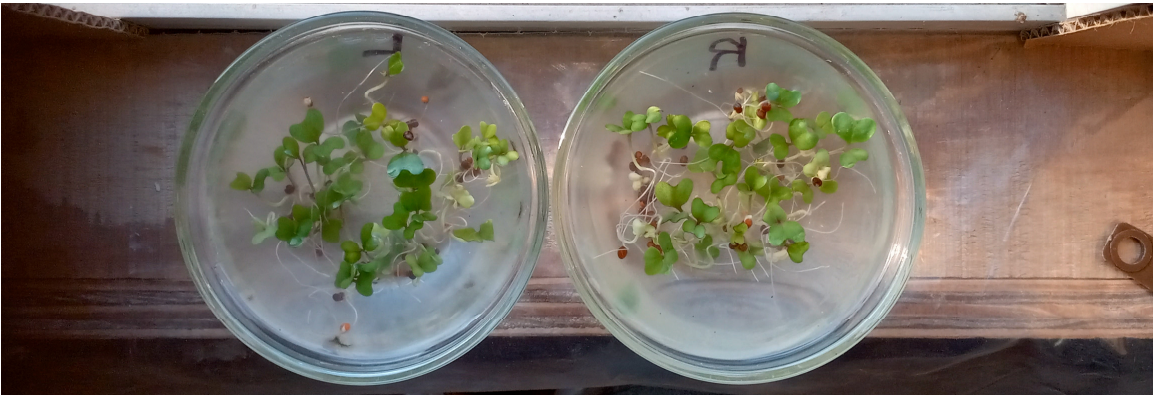
Day 8:



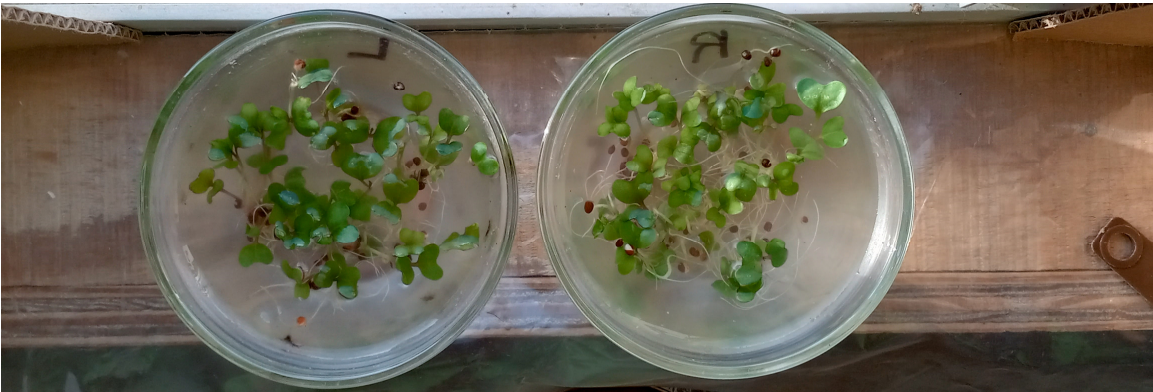
Day 10:



Day 13:



Day 17:



Day 19 Final Tally:
LCS L:



LCS R:



Discussion and statistics:

Notes from LeastComicStanding: "I basically stuck to 5 minutes a day, starting around 3:33pm, beginning the week before (when you notified that the water was set up). I utilized Bengston cycling for the first 13 days and I guess at that point I wasn't seeing the results I was hoping for along the way so I started changing it up a bit to normal healing type focuses (sitting with it, sending love, holding positive visuals, etc...)."

More on next page:

The original theory was that the treated dish would be different from the untreated dish, so if one of the dishes was similar to the known controls, we could deduce that the other dish was the treated one. However, looking at the first data set where we "Compare LCS to each other", we see that there is no statistically significant difference between L and R. At first glance, it looked like LCS was a dud. But further number crunching (below) surprised us.

	Comparing LCS to each other						
	Total Sprouts	Unsprouted	Total		Full Sprouts	Other	Total
LCS L	39	11	50	LCS L	38	12	50
LCS R	39	11	50	LCS R	35	15	50
Total	78	22	100	Total	73	27	100
	expected				expected		
	39.00	11.00			36.50	13.50	
	(O-E) ² /E				(O-E) ² /E		
	-	-	$\chi^2 =$	-	0.06	0.17	$\chi^2 =$ 0.46
	-	-	p value =	1.000	0.06	0.17	p value = 0.499

When we compared LCS to the 2 known controls, we showed that, using Full Sprouts as the criteria, dish L had significantly enhanced growth with $p < 0.05$. We correctly deduced that L was the treated dish.

	Comparing LCS to 2 known controls						
	Total Sprouts	Unsprouted	Total		Full Sprouts	Other	Total
vic X + mags X	65	35	100	X + X	59	41	100
LCS L	39	11	50	LCS L	38	12	50
Total	104	46	150	Total	97	53	150
	expected				expected		
	69.33	30.67			64.67	35.33	
	34.67	15.33			32.33	17.67	
	(O-E) ² /E				(O-E) ² /E		
	0.27	0.61	$\chi^2 =$	2.65	0.50	0.91	$\chi^2 =$ 4.22
	0.54	1.22	p value =	0.104	0.99	1.82	p value = 0.040

Dish R was not significantly different from the controls, but was leaning in the right direction.

	Total Sprouts	Unsprouted	Total		Full Sprouts	Other	Total
vic X + mags X	65	35	100	X + X	59	41	100
LCS R	39	11	50	LCS R	35	15	50
Total	104	46	150	Total	94	56	150
	expected				expected		
	69.33	30.67			62.67	37.33	
	34.67	15.33			31.33	18.67	
	(O-E) ² /E				(O-E) ² /E		
	0.27	0.61	$\chi^2 =$	2.65	0.21	0.36	$\chi^2 =$ 1.72
	0.54	1.22	p value =	0.104	0.43	0.72	p value = 0.189

Combining both dishes of LCS with both dishes of known controls from the other two experiments, we show significant results with $p < 0.05$. Did LCS inadvertently treat both jars of water, or did the treated dish "infect" the neighboring untreated dish? These are questions that require replication.

	Comparing combined LCS to 2 known controls						
	Total Sprouts	Unsprouted	Total		Full Sprouts	Other	Total
vic X + mags X	65	35	100	X + X	59	41	100
LCS L + R	78	22	100	L + R	73	27	100
Total	143	57	200	Total	132	68	200
	expected				expected		
	71.50	28.50			66.00	34.00	
	(O-E) ² /E				(O-E) ² /E		
	0.59	1.48	$\chi^2 =$	4.15	0.74	1.44	$\chi^2 =$ 4.37
	0.59	1.48	p value =	0.042	0.74	1.44	p value = 0.037